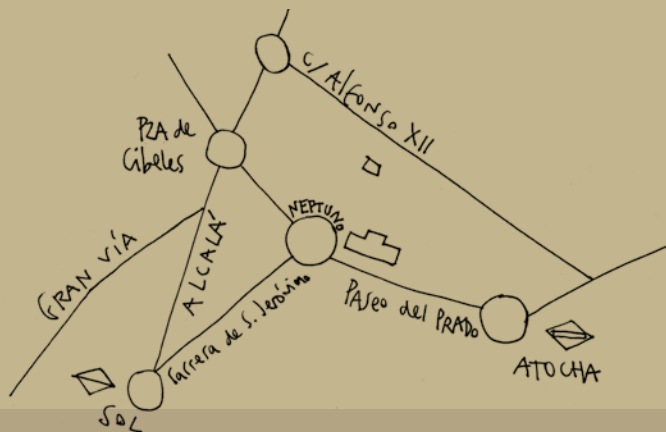


# Museo del Prado

## *Private events*



# Exceptional events in one of the world's finest art museums



## *Welcome*

The Museo Nacional del Prado is a place inhabited by the great masters, and their inspiration is contagious. Its exclusive venues offer the opportunity to hold private visits, presentations, corporate anniversaries, award ceremonies, meetings, private concerts and more, and they are a guarantee of unique events to be enjoyed and remembered.

## *Contact*

The Museum places a team with twenty years' experience in event management at your disposal.  
**[eventos.privados@museodelprado.es](mailto:eventos.privados@museodelprado.es)**

The members of the Museo del Prado Sponsorship Programme are entitled to exclusive benefits.  
**[patrocinio@museodelprado.es](mailto:patrocinio@museodelprado.es)**

# Venues

## The importance of the setting

The Museo Nacional del Prado forms a museum campus made up of several buildings located in the historic heart of Madrid: the Villanueva Building, the Jerónimos Building, the Casón del Buen Retiro and the Salón de Reinos (Hall of Realms). The forthcoming restoration of the last of these will round off the configuration of one of the most singular urban cultural sites in Spain, combining the architectural excellence of a historic figure, Juan de Villanueva, with that of two Pritzker Prize winners, Rafael Moneo and Norman Foster.

In addition, the adjacent promenade, the Paseo del Prado, has been included to the UNESCO World Heritage in 2021, as a “landscape of the arts and sciences”, since it was one of the world’s first tree-lined avenues intended for public leisure, also embodying iconic transcendental institutions as the Museo del Prado.





EVENTS WITH  
THE MUSEUM OPEN  
Monday to Saturday:  
10am to 8pm  
Sundays and public holidays:  
10am to 7pm

---

EVENTS WITH  
THE MUSEUM CLOSED  
Monday to Saturday:  
from 8.30pm  
Sundays and public holidays:  
from 7.30pm

---

# JERÓNIMOS BUILDING

*The architecture of a Pritzker Prize winner*

## Auditorium

**A great 21st century amphitheatre.** Located on the ground floor of the Jerónimos Building, this venue was designed by Rafael Moneo. With its imposing size and modern aesthetics, it boasts comfortable seating and audiovisual technology that permits projections, live streaming and simultaneous interpretation.

Capacity: 400 people /

Availability: Museum open and closed



## Lecture Hall

**A question of scale.** On the ground floor of the Jerónimos Building, Rafael Moneo created a smaller and more intimate version of the auditorium. This is a multi-purpose venue with comfortable seating and audiovisual technology.

Capacity: 48 people /

Availability: Museum open and closed



## Protocol Room

**A meeting point in the center of Madrid.**

This venue in the Jerónimos Building was designed by Rafael Moneo with an appropriate size for a meeting room, with natural light entering through a large window.

Capacity: 14 people /

Availability: Museum open and closed



## Vestibule

**The place where it all begins.** This multi-purpose space connects the Jerónimos and Villanueva buildings. Its location, infrastructure and design make it a perfect venue for a cocktail reception, since it complements other nearby venues like the Hall of the Muses and the Auditorium.

Capacity: 400 people /

Availability: Museum closed



## Cloister

**A monumental history.** With a square plan and two storeys, the Cloister of Los Jerónimos is of exceptional historic and artistic interest. It formed part of the Monastery of San Jerónimo el Real, founded by King Henry IV. Rafael Moneo's project to expand it envisaged its refurbishment as an integral part of the Museo del Prado, maintaining its distinctive character while respecting its exact original layout. Housed in it are the sculptures of the Habsburgs by the Leoni, as well as the Museum's painting and sculpture restoration workshops. All this is arranged around an area covered by a spectacular skylight that allows it to be adapted for tributes, dinners, cocktails, concerts or receptions.

Capacity: 350 people

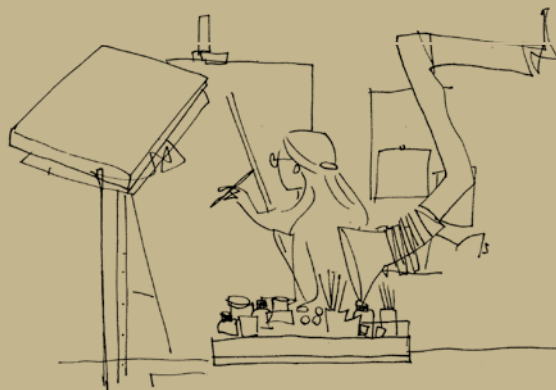


## Temporary exhibitions galleries

**Pleasure in or out of context.** The Museum's intense programme of exhibitions offers countless opportunities for organising guided private visits for the directors, clients or employees of firms and corporations. In the periods when they are housing no temporary exhibitions, these highly versatile rooms can also be used to host presentations, meetings or similar activities.

Availability: Museum closed for private visits to temporary exhibitions.

Museum open and closed during periods when no temporary exhibitions are being held.



## Internal areas

### **The fascination of the unseen.**

Much of the Jerónimos Building houses services that ensure the conservation of the collections, such as storerooms or restoration workshops. Visits to these areas are very restricted, and are allowed only on exceptional occasions and upon request.

# VILLANUEVA BUILDING

*Immersion in the world's finest art collection*

## Permanent exhibition galleries

### **The experience of the beautiful and the sublime.**

The Villanueva Building is used almost in its entirety to display the Museum's painting and sculpture collections, regarded as among the world's finest. The conservation of the works of great masters like El Greco, Titian, Velázquez and Goya is compatible with the organisation of private visits when the Museum is closed to the public, and with concerts, recitals and similar events offering guests a brief respite from the world outside.

---

Availability: Museum closed



## Hall of the Muses

**Its name says it all.** Located in the heart of the Villanueva Building, this apsidal hall decorated with Pompeiian red stucco was redesigned by Rafael Moneo, and is tremendously evocative of the interior of a great museum. Its size, characteristics and location make it a unique setting for presentations, receptions, cocktails, meetings, concerts, recitals and similar events.

---

Capacity: 200 people /

Availability: Museum closed



## Ionic Galleries

**On the Paseo del Prado.** These rectangular halls run parallel to the Museum's main façade dedicated to Velázquez, and their large windows overlook the gardens on one side, and the galleries housing works by artists like Raphael on the other.

---

Capacity: 80 people



## Murillo Court

**Authenticity in the birck of the past.** Designed in the 18th century by Juan de Villanueva as part of his original project, this large brick courtyard is located at the southern end of the building, where it looks onto the Botanical Garden. The square courtyard is not covered, making it ideal for cocktail receptions when the weather permits.

Capacity: 100 people

## Murillo Terrace

**The Museum outside the Museum.** This terrace is located alongside a small pavilion in the southern area of the Villanueva Building. Enlivened by the adjacent Botanical Garden, this picturesque corner is visible through the wrought iron railings that surround it. Highly suitable for cocktail receptions, weather permitting.

Capacity: 250 people /

Availability: Museum open and closed



## Goya Rotunda

**The hallmark of a great Museum.**

The great historical importance of the Goya Rotunda makes it one of the most emblematic spaces in the Museo del Prado. Originally designed as a reception area for royal visits, it was soon turned into an entrance for the visiting public of the 19th century. The grand flight of steps leading to the Rotunda guarantees that any event held there will be spectacular. This venue's characteristics make it ideal for recitals and similar events.

Capacity: 100 people /

Availability: Museum closed



# CASÓN DEL BUEN RETIRO

*Past and present in full view*

## Aula Magna

**A round table unlike any other .**

This large meeting room, where works from the permanent collection are also displayed, offers splendid views of Retiro Park from the building's large original windows. Its arrangement and furnishings make it ideal for courses, seminars and business meetings.

Capacity: 44 people



## Other rooms

Fully equipped for presentations, meeting or training seminars.

## Meeting Rooms

**Conversations beneath a vaulted ceiling.** The building of the Casón del Buen Retiro holds two meeting rooms whose dimensions and ceilings make the aesthetic difference for small gatherings or business meetings. One also incorporates an office area.





## Thematic visits

**A Museum full of histories.** The collection of the Museo del Prado invites as many readings as there are eyes to see it. Sharing the space of its galleries are gods, kings, mythological beings, animals, landscapes and objects that can transport us to other settings and other times. They offer an opportunity to articulate discourses to suit the objectives of every event or visit and the pleasure of experiencing different sensations.

## Visit to the temporary exhibitions

**The enchantment of art.** The Museum runs an ambitious programme of temporary exhibitions centred on its collections which attract more than 2 million visitors each year. To be able to enjoy them with expert commentaries when the museum is closed is a pleasure for anyone who has the experience.

## Concerts or recitals

**Adding up the arts.** The artistic treasures housed at museums make their premises into fertile and timeless places that boost the evocative power of the performing arts when it comes to hosting other forms of culture, such as music or literature. Imperishable memories are left by experiences like listening to a soprano's voice during a piano recital, thrilling to a dramatised reading, or revelling in the verses of a poet.

## Meetings

**The importance of the setting.** There are many formats for bringing a number of people together, and all are catered for by the Museum's venues. Round tables, award ceremonies, book presentations, anniversaries, conventions, seminars... The location of the Prado and its exceptional facilities put it at the forefront of the organisation of events of this kind.

## Cocktails, luncheons or dinners

**A Museum with good taste.** The best way to round off a cultural event at the Museum is to follow it with a luncheon, a dinner or a cocktail reception in one of its specially equipped venues. This makes it possible to continue to enjoy the most emblematic place in Madrid without having to forgo a more social occasion.

**Venues capacity may be modified depending on the type of event, set-up, technical characteristics.**

Ask for our exhibition programme at [eventos.privados@museodelprado.es](mailto:eventos.privados@museodelprado.es) or consult it at [www.museodelprado.es/actualidad/exposiciones](http://www.museodelprado.es/actualidad/exposiciones)





#### CLOISTER ENTRANCE

The Museum's most sculptural and contemporary entrance is a work of art in itself. Its organic web of bronze breaks into the regularity of the brick surface of the building designed by Rafael Moneo.

#### JERÓNIMOS ENTRANCE

A passage to a cave of wonders reached by a path running between gentle grassy slopes. The entrance to Rafael Moneo's architectural extension is located at the foot of the steps that lead to the church of Los Jerónimos.

#### GOYA ENTRANCE

The most scenic entrance owing to the grand flight of steps leading to the Goya Rotunda and the Museum's spectacular central gallery.



#### VELÁZQUEZ ENTRANCE

The most institutional and museographic of the Museum's entrances lies behind a sculpture of Velázquez, the great demiurge of the Museo del Prado. Its classical portico and the portraits of the great artists in the interior make it clear to visitors that they are in the temple of the Muses.

# FEES / TARIFFS 2023\*

## Private Visits

<b>Permanent Collections and Temporary Exhibitions, once the Museum is closed to the public.</b>	First group up to 25 pax/people 4.000 €. Each additional group up to 25 pax/people, 800 €
<b>Conservation studios, Artworks storage facilities and other restricted areas, explicit authorization from the Museum Director will be required.</b>	One group up to 15 pax/people, 6.000 €

## Jerónimos Building

<b>Auditorium</b>	Up to 3h of use, 4.500 €; each additional hour 1.500 €
<b>Cloister</b>	Up to 3h of use, 12.000 €; each additional hour 4.000 €
<b>Apse Courtyard</b>	Up to 3h of use, 4.500 €; each additional hour 1.500 €
<b>Conference Room</b>	Up to 3h of use, 3.000 €; each additional hour 1.000 €
<b>Protocol Room</b>	Up to 3h of use, 3.000 €; each additional hour 1.000 €
<b>Exhibition Rooms</b>	Up to 3h of use, 6.000 €; each additional hour 2.000 €
<b>Terraza (oudoors)</b>	Up to 3h of use, 3.000 €; each additional hour 1.000 €
<b>Jerónimos Entrance Hall</b>	Up to 3h of use, 4.500 €; each additional hour 1.500 €

\*Tariffs may be updated when Spain's 2024 State Budget is approved.

# FEES / TARIFFS 2023\*

## Villanueva Building

<b>Room 12 <i>Meninas</i></b>	Up to 3h of use, 21.000 €
<b>Permanent Collections Rooms</b>	Up to 3h of use, 15,000 €
<b>Murillo Pavilion</b>	Up to 3h of use, 3.000 €; each additional hour 1.000 €
<b>Murillo Patio</b>	Up to 3h of use, 4.500 €; each additional hour 1.500 €
<b>Goya Rotunda</b>	Up to 3h of use, 4.500 €; each additional hour 1.500 €
<b>Muses Hall</b>	Up to 3h of use, 4.500 €; each additional hour 1.500 €
<b>Ionian Galleries (ground floor)</b>	Up to 3h of use, 3.000 €; each additional hour 1.000 €
<b>Murillo Terraza</b>	Up to 3h of use, 4.500 €; each additional hour 1.500 €

\*Tariffs may be updated when Spain's 2024 State Budget is approved.

# FEES / TARIFFS 2023\*

## Casón del Buen Retiro

Luca Giordano Room (Library)	Up to 3h of use, 6.000 €; each additional hour 2.000 €
Aula Magna	Up to 3h of use, 4.500 €; each additional hour 1.500 €
Meeting rooms	Up to 3h of use, 3.000 €; each additional hour 1.000 €
Classrooms 1 and 2	Up to 3h of use, 1.500 €; each additional hour 500 €

## Other spaces

Other spaces, different from those above, susceptible of use such as exhibition galleries, lobby areas, and non-exhibition areas.	Single tariff: 7 €/ m²/hour
---	-----------------------------

\*Tariffs may be updated when Spain’s 2024 State Budget is approved.

eventos.privados@museodelprado.es



# MUSEO NACIONAL DEL PRADO

Illustrations: Ximena Maier

Photographs: Francesco Jodice, Gorka Lejarcegui,  
Alberto Otero, José Baztán / Museo Nacional del Prado